

Faculty Driven Approach to Interdisciplinary Research Development

Carrie Berger, PhD

Associate Dean for Research

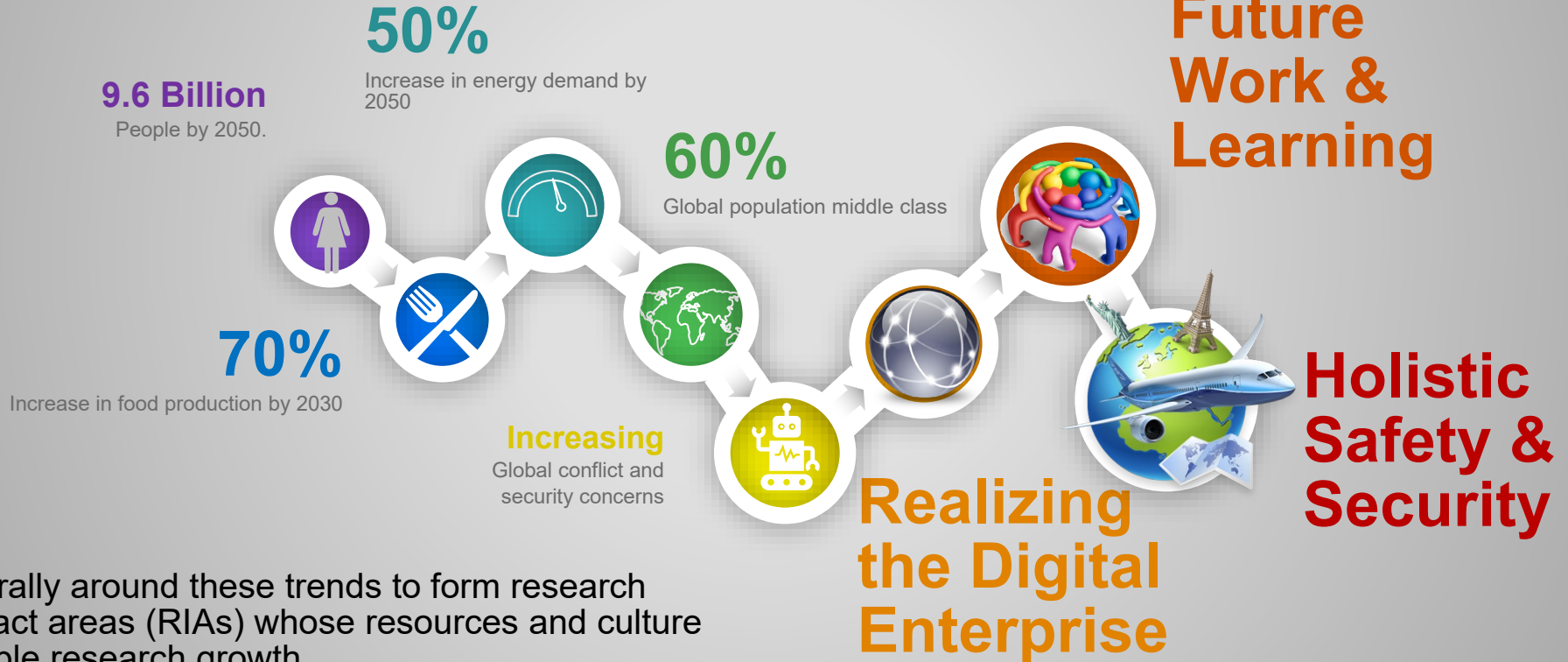
Purdue Polytechnic Institute

College Snapshot

- One of ten academic colleges at Purdue
- Six schools/departments
 - School of Engineering Technology
 - School of Aviation and Transportation Technology
 - School of Construction Management Technology
 - Department of Computer Information Technology
 - Department of Computer Graphics Technology
 - Department of Technology, Leadership, and Innovation
- 150 T/TT faculty
- 740 graduate students
- 4,000 undergraduate students

Global Megatrends & Social Challenges

Interdisciplinary Solutions are Required



We rally around these trends to form research impact areas (RIAs) whose resources and culture enable research growth.

Three areas – one vision: impact global grand challenges through interdisciplinary research



Future Work
& Learning

Holistic
Safety &
Security

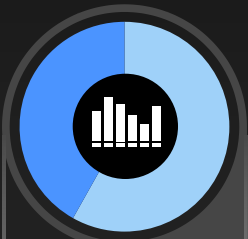
Realizing the
Digital
Enterprise

Research Impact Areas

- Three common goals:
 - Create communities of researchers based on trust
 - Faculty mentoring
 - Increase research activity & prominence
- RIAs have faculty co-leads, appointed as Dean's Fellows
- Participating members determine allocation of resources – seed grants, conference travel, hosting external speakers
- Focus on new, interdisciplinary collaborations
- External research awards doubled in 3 years

RESEARCH IMPACT AREAS (RIAs)

Faculty Collaborate for Impact



61%

ENGAGEMENT

- T/TT Faculty activity participating in RIAs



35

COLLABS

- New interdisciplinary collaborations established



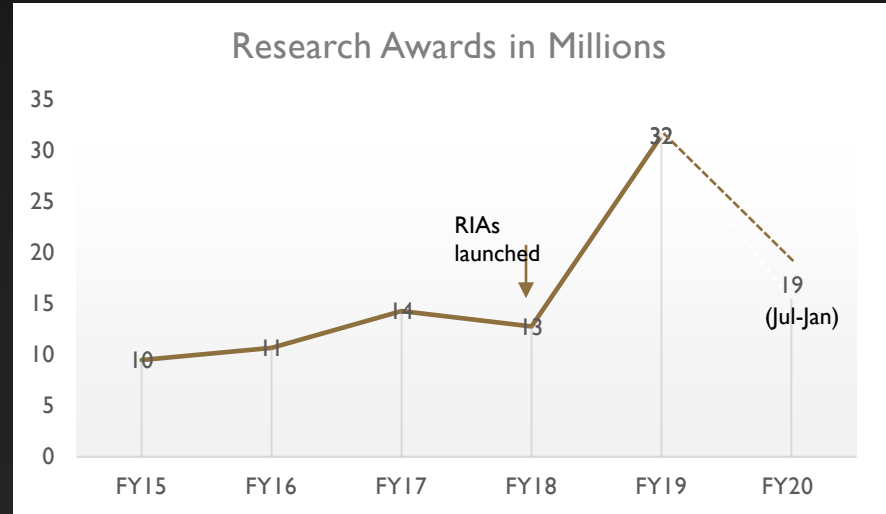
3.5-fold

ROI

- FY18-19 Internal investments lead to external grants and publications

Research growth

A faculty-driven approach to culture change leads to success. Faculty are empowered to make internal funding decisions and lead change. Faculty are incentivized and rewarded for participating in the change effort. Faculty are supported administratively from shared resources (admin assistant, research development professional, research PM).



Carrie Berger

**Associate Dean for Research
Purdue Polytechnic Institute
carrieb@purdue.edu**

polytechnic.purdue.edu

